

Denton 365

LOT WIDTH
13m

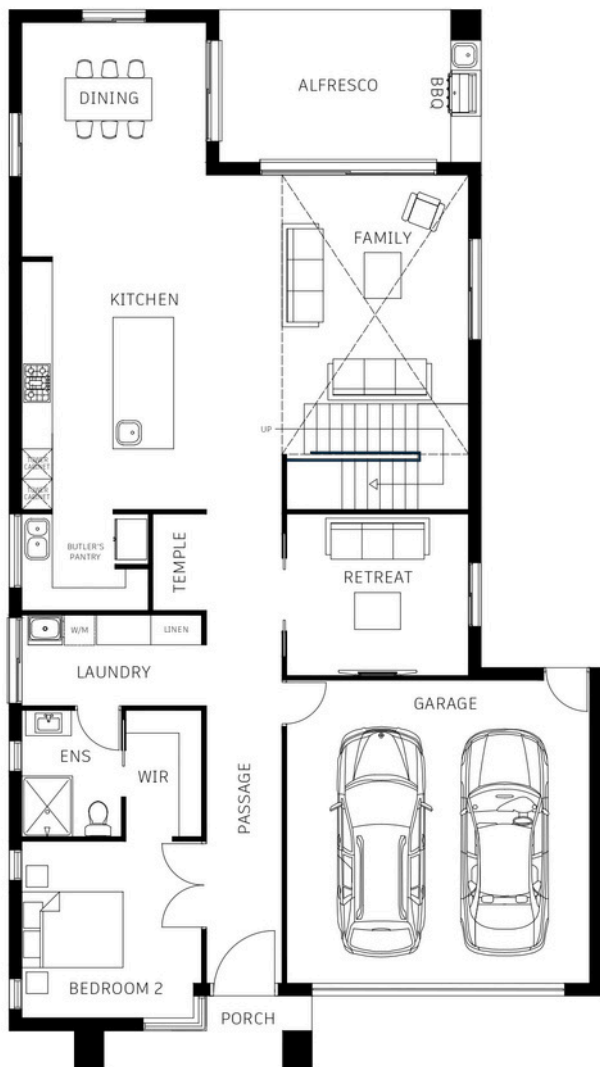
TOTAL FLOOR AREA
234.0sqm

 **5**  **3**  **3**  **2**

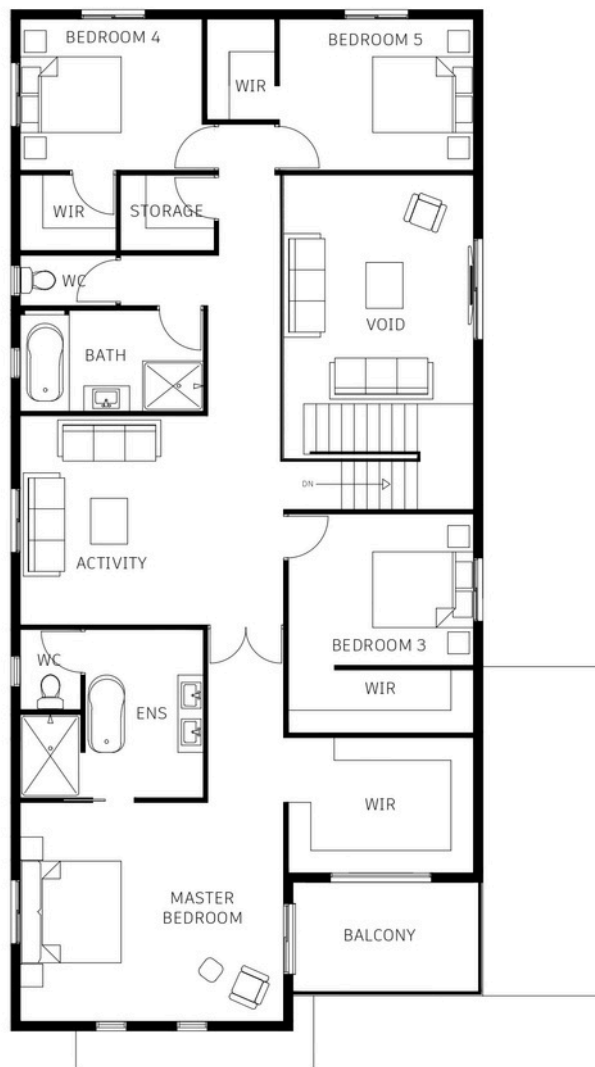


INOX Homes
— Build • Trust • Quality —

www.inoxhomesqld.com.au



GROUND FLOOR



FIRST FLOOR

Home Area

Total Area	365.7sqm
Ground Floor	205.7sqm
First Floor	160.0sqm

Ground Floor Area

Double Garage	6.0 x 6.0
Family	5.8 x 4.5
Dining	3.6 x 3.0
Retreat	3.6 x 3.2
Bedroom 2	3.6 x 3.5

First Floor Area

Master Bedroom	5.2 x 4.3
Ensuite	3.6 x 3.3
Bedroom 3	3.7 x 3.0
Bedroom 4	3.6 x 3.0
Bedroom 5	3.8 x 3.0
Activity	3.7 x 4.2

Elevate your lifestyle with our exclusive collection of homes, each meticulously crafted to offer an unparalleled experience of luxury living. Step into a realm where every detail has been thoughtfully considered, and where space is not just a measurement but a canvas for your dreams to unfold. Welcome home to a life of opulence, where every corner whispers stories of indulgence and refinement.

*Subject to site orientation, land gradient, and adherence to developer and council regulations, the floorplan depicted represents a conventional layout.